

# BALDWIN®

## CABINET HARDWARE

### *Collection Overview*



2026



## OVER 80 YEARS OF UNCOMPROMISING CRAFTSMANSHIP

Baldwin has long been synonymous with elevated design and enduring quality. That legacy now extends beyond the door. Our cabinet hardware collection embodies the same dedication to artistry and excellence, crafted in solid brass and available in nine stunning finishes that integrate seamlessly into any design vision. Whether you're refreshing a timeless treasure or embarking on a full renovation, Baldwin hardware brings refinement to kitchens, baths, desk drawers, and statement furniture alike.

With collections that echo our most beloved door hardware styles—from bold contemporary lines to graceful traditional silhouettes—you can now achieve a fluid, cohesive look throughout your home.

Baldwin continues to enhance our cabinet hardware portfolio with new finishes and new lengths.





## BALDWIN QUICK SHIP PROGRAM

With Baldwin Quick Ship, you no longer have to choose between impeccable craftsmanship and timely delivery.

Cabinet hardware in all solid finishes and all styles now join our carefully curated selection of the most sought-after designs and finishes within the Quick Ship program. With over 6,000 pieces available, each crafted in solid brass and ready to ship within five business days, Baldwin makes it effortless to bring luxury home—quickly.

From cabinet hardware to door accents, experience the enduring beauty of Baldwin with the convenience of expedited delivery. Spend less time waiting, and more time living beautifully. Featuring newly introduced finishes and expanded lengths across all our cabinet collections.



## BALDWIN BESPOKE MIXED METAL *program*

Customize. Coordinate. Create.

Bring your vision to life with Baldwin's Bespoke Mixed Metal program.

Tailor your cabinet hardware to complement your lighting, appliances, plumbing, and accessories—transforming functional details into true statement pieces. Our Gramercy and Modern cabinet hardware collections now offer the ability to customize with any two cabinet hardware finishes, allowing you to create a look that is uniquely your own.

Thoughtfully curated finishes and timeless designs elevate everyday hardware into extraordinary artistry for your cabinetry.

CABINET HARDWARE *finishes*

All our cabinet hardware is available in nine stunning finishes, including four ultra-durable PVD lifetime finishes for lasting beauty and performance. From bold to classic, each finish is designed to elevate your space with timeless style.



BESPOKE MIXED METAL FINISHES

Use the chart below to determine the final finish code for your custom piece.  
All cabinet hardware finish combinations are Bespoke Mixed-Metal selections.

FINISH B											
FINISH A			003	031	044	055	*150	076	112	190	260
			A	B	D	F	G	J	L	M	N
	003	A		MAB	MAD	MAF	MAG	MAJ	MAL	MAM	MAN
	031	B	MBA		MBD	MBF	MBG	MBJ	MBL	MBM	MBN
	044	D	MDA	MDB		MDF	MDG	MDJ	MDL	MDM	MDN
	055	F	MFA	MFB	MFD		MFG	MFJ	MFL	MFM	MFN
	*150	G	MGA	MGB	MGD	MGF		MGJ	MGL	MGM	MGN
	076	J	MJA	MJB	MJD	MJF	MJG		MJL	MJM	MJN
	112	L	MLA	MLB	MLD	MLF	MLG	MLJ		MLM	MLN
	190	M	MMA	MMB	MMD	MMF	MMG	MMJ	MML		MMN
	260	N	MNA	MNB	MND	MNF	MNG	MNJ	MNL	MNM	

\*150 is complimentary to 056

# BALDWIN<sup>®</sup> ESTATE<sup>™</sup>

## *cabinet hardware*

Our Baldwin Hardware cabinet hardware collections, crafted from solid brass, are now available in a broad range of sizes to suit every design vision.

### CABINET



### APPLIANCE





# OCTAGONAL

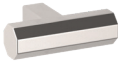
The Octagonal Collection is a study in modern refinement, showcasing an elongated geometric form with a sculptural octagonal grip. Its multifaceted lines catch the light with quiet brilliance, bringing architectural sophistication and texture to any space.





# CABINET HARDWARE | OCTAGONAL

## KNOBS



4416.xxx.BIN – 1.25"



4440.xxx.BIN – 1.25"



4441.xxx.BIN – 1.375"

## CABINET PULLS

4417.xxx.BIN – 4"



4418.xxx.BIN – 6"



4468.xxx – 8"



4689.xxx – 10"



4419.xxx – 12"



## APPLIANCE PULLS

4469.xxx – 8"



4470.xxx – 12"



4420.xxx – 18"



4471.xxx – 24"





KNOBS



4410.xxx.BIN – 1.25"



4411.xxx.BIN – 1.5"

CABINET PULLS

4412.xxx.BIN – 4"



4413.xxx.BIN – 6"



4414.xxx – 8"



4684.xxx – 10"



4414.xxx – 12"



APPLIANCE PULLS

4615.xxx – 8"



4616.xxx – 12"



4415.xxx – 18"



4617.xxx – 24"



# BEVEL







# RAISED





The Raised Collection introduces architectural depth and dimension with its distinctive stepped-edge profile. A subtle nod to the glamour of 1920's design, its elevated detailing evokes the tailored elegance of early modernist form.



CABINET HARDWARE | RAISED

---

KNOB



4425.xxx.BIN – 1.125"

---

CABINET PULLS

4426.xxx.BIN – 4"



4427.xxx.BIN – 6"



4344.xxx – 8"



4691.xxx – 10"



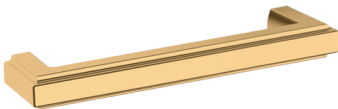
4428.xxx – 12"



---

APPLIANCE PULLS

4345.xxx – 8"



4346.xxx – 12"



4429.xxx – 18"



4347 – 24"





KNOBS



4404.xxx.BIN – 1.25"



4405.xxx.BIN – 1.5"

CABINET PULLS

4606.xxx.BIN – 4"



4407.xxx.BIN – 6"



4656.xxx – 8"



4685.xxx – 10"



4408.xxx – 12"



APPLIANCE PULLS

4657.xxx – 8"



4658.xxx – 12"



4409.xxx – 18"



4659.xxx – 24"



# MINNEAPOLIS





The Minneapolis Collection embodies refined minimalism, with crisp modern lines and a subtly rounded interior for a comfortable, tailored grip. Understated yet impactful, it brings purposeful elegance to every detail.



# SEVERIN FAYERMAN COLLECTION A





# SEVERIN FAYERMAN

## COLLECTION B



CABINET HARDWARE | SEVERIN FAYERMAN A

KNOBS



4452.xxx.BIN - 1"



4453.xxx.BIN - 1.25"

CABINET PULLS

4357.xxx.BIN - 4"



4947.xxx.BIN - 6"



4665.xxx - 8"



4692.xxx - 10"



4673.xxx - 12"



APPLIANCE PULLS

4666.xxx - 8"



4667.xxx - 12"



4360.xxx - 18"



4668.xxx - 24"



## CABINET PULLS

4362.xxx.BIN – 4"



4395.xxx.BIN – 6"



4439.xxx – 8"



4693.xxx – 10"



4397.xxx – 12"



---

## APPLIANCE PULLS

4396.xxx – 8"



4364.xxx – 12"



4365.xxx – 18"



4398.xxx – 24"





# PALM SPRINGS

Rooted in true Mid-Century Modern design, the Palm Springs Collection features a fluid, organic silhouette that embodies the relaxed elegance of its iconic namesake. With coordinating interior and exterior hardware, it offers a seamless expression of style throughout the home.





## KNOB



4970.xxx.BIN – 1,15"

## CABINET PULLS

4971.xxx.BIN – 4"



4976.xxx.BIN – 6"



4651.xxx – 8"



4690.xxx – 10"



4964.xxx – 12"



## APPLIANCE PULLS

4652.xxx – 8"



4653.xxx – 12"



4675.xxx – 18"



4654.xxx – 24"



# HOLLYWOOD HILLS

The Hollywood Hills Collection draws on the clean lines of modernist design, infused with the timeless glamour of old Hollywood. Offered across both interior and exterior hardware, it allows for a cohesive, sophisticated statement throughout the home.



## KNOBS



4972.xxx.BIN - 1.25"



4973.xxx.BIN - 1.5"

## CABINET PULLS

4400.xxx.BIN - 4"



4486.xxx.BIN - 6"



4661.xxx - 8"



4687.xxx - 10"

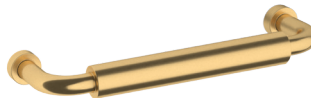


4669.xxx - 12"



## APPLIANCE PULLS

4662.xxx - 8"



4663.xxx - 12"



4956.xxx - 18"



4664.xxx - 24"



# COLONIAL





# CUP PULL



# TRANSITIONAL CUP PULL





# EDGE PULL





# CABINET HARDWARE | PULLS

---

## COLONIAL

4964.xxx.BIN – 4"



4946.xxx.BIN – 6"



---

## CUP

4424.xxx.BIN – 4"



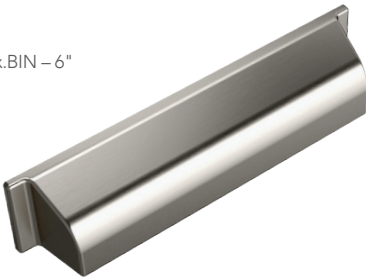
---

## TRANSITIONAL CUP PULLS

4421.xxx.BIN – 4"



4422.xxx.BIN – 6"



# CABINET HARDWARE

---

## EDGE PULLS

4647.xxx.BIN – 2"



4648.xxx.BIN – 4"



4649.xxx.BIN – 6"



SPHERICAL



4960.xxx.BIN – 1"



4961.xxx.BIN – 1.25"

TULIP



4402.xxx.BIN – 1.25"



4403.xxx.BIN – 1.5"

DOMINION



4490.xxx.BIN – 1"



4491.xxx.BIN – 1.25"

CLASSIC



4704.xxx.BIN – 1.25"



4706.xxx.BIN – 1.5"

OVAL



4910.xxx.BIN – 1.125"



4913.xxx.BIN – 1.312"

# SPHERICAL





# TULIP



# FLUSH RING PULLS



0392.xxx – 1.25"



0393.xxx – 1.625"



0394.xxx – 1.875"



0395.xxx – 2.5"



0397.xxx – 3.5"

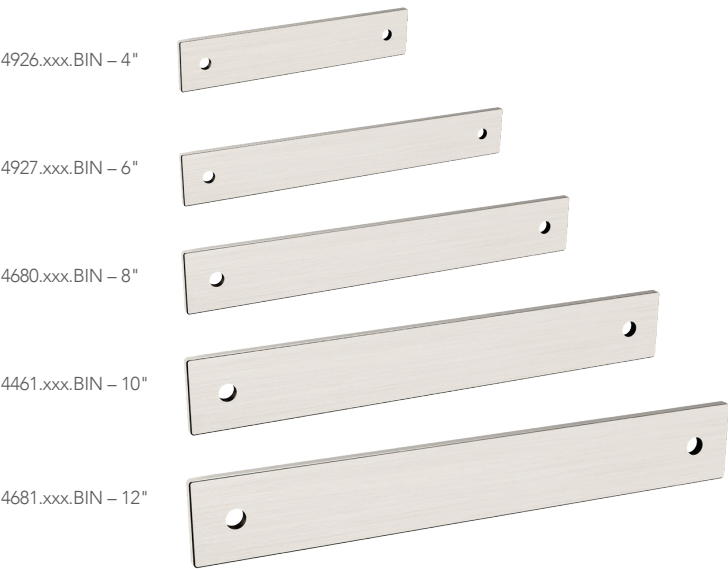




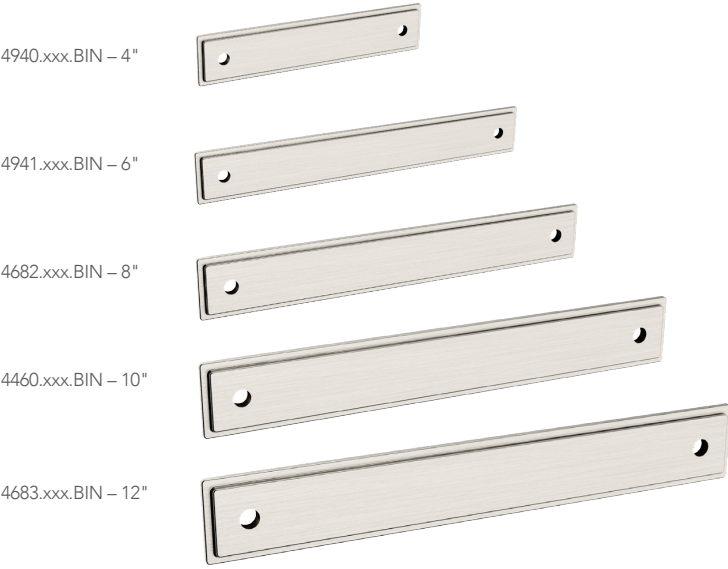
# BACK PLATE



CONTEMPORARY



TRANSITIONAL



# Bespoke Mixed Metal Collection

**CUSTOMIZE. COORDINATE. CREATE.**

Bring your vision to life with Baldwin's Bespoke Mixed Metal program.

Tailor your cabinet hardware to complement your lighting, appliances, plumbing, and accessories—transforming functional details into true statement pieces. Our Gramercy and Modern cabinet hardware collections now offer the ability to customize with any two cabinet hardware finishes, allowing you to create a look that is uniquely your own.

Thoughtfully curated finishes and timeless designs elevate everyday hardware into extraordinary artistry for your cabinetry.





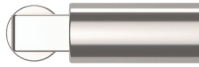
# GRAMERCY

The Gramercy Collection blends structured edges with a soft, rounded grip inspired by Gramercy Park's ornate ironwork. An optional base plate adds refined detail, while matching interior and exterior hardware creates a cohesive design.

Available in our 9 solid finish options as well as our Bespoke Mixed Metal options, combining two tones for a unique, customized look.



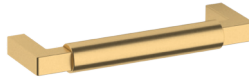
KNOB



4430.xxx.BIN – 1.5"

CABINET PULLS

4431.xxx.BIN – 4"



4432.xxx.BIN – 6"



4640.xxx – 8"



4686.xxx – 10"

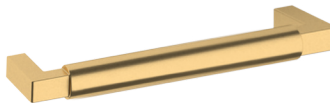


4433.xxx – 12"



APPLIANCE PULLS

4641.xxx – 8"



4642.xxx – 12"



4434.xxx – 18"



4643.xxx – 24"







## CABINET HARDWARE | MODERN **B**

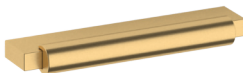
### KNOB



4623.xxx.BIN – 1.875"

### CABINET PULLS

4624.xxx.BIN – 4"



4625.xxx.BIN – 6"



4626.xxx – 8"



4688.xxx – 10"



4627.xxx – 12"



Our award-winning Modern Cabinet Collection makes a bold statement. With a substantial base it features pre-drilled center-to-center options—3", 3.5", 4", and 6"—it brings versatile elegance to cabinetry of all sizes.

Also available in our exclusive Bespoke Mixed Metal finish, each piece artfully blends two finishes for a distinctive, tailored look.



# CREMONE BOLTS



## CREMONE BOLTS OPTIONS

CREMONE BOLT  
8105



ORNAMENTAL CREMONE BOLT  
8106



CONTEMPORARY CREMONE BOLT  
8107





Cremone Bolts merge architectural sophistication with functional security. With a selection of three distinctive designs, from modern to timeless elegance, they allow for a streamlined yet unique aesthetic that elevates any cabinetry.

Also available in our Bespoke Mixed Metal finish, combining two tones for a unique, customized look.







# Explore Our Full Cabinet Hardware Collection with Pricing

To view the complete line and current list pricing for our entire cabinet hardware collection, simply scan the QR code below.







BROWSE ALL CABINET HARDWARE:  
[BALDWINHARDWARE.COM/PRODUCTS/CABINET-HARDWARE](https://BALDWINHARDWARE.COM/PRODUCTS/CABINET-HARDWARE)



FOLLOW US **@BALDWINHARDWARE** TO SEE MORE DESIGN INSPIRATION!  
TAG US IN YOUR PROJECT PHOTOS TO BE FEATURED.

19701 DA VINCI, LAKE FOREST, CA 92610  
**800.566.1986 BALDWINHARDWARE.COM**